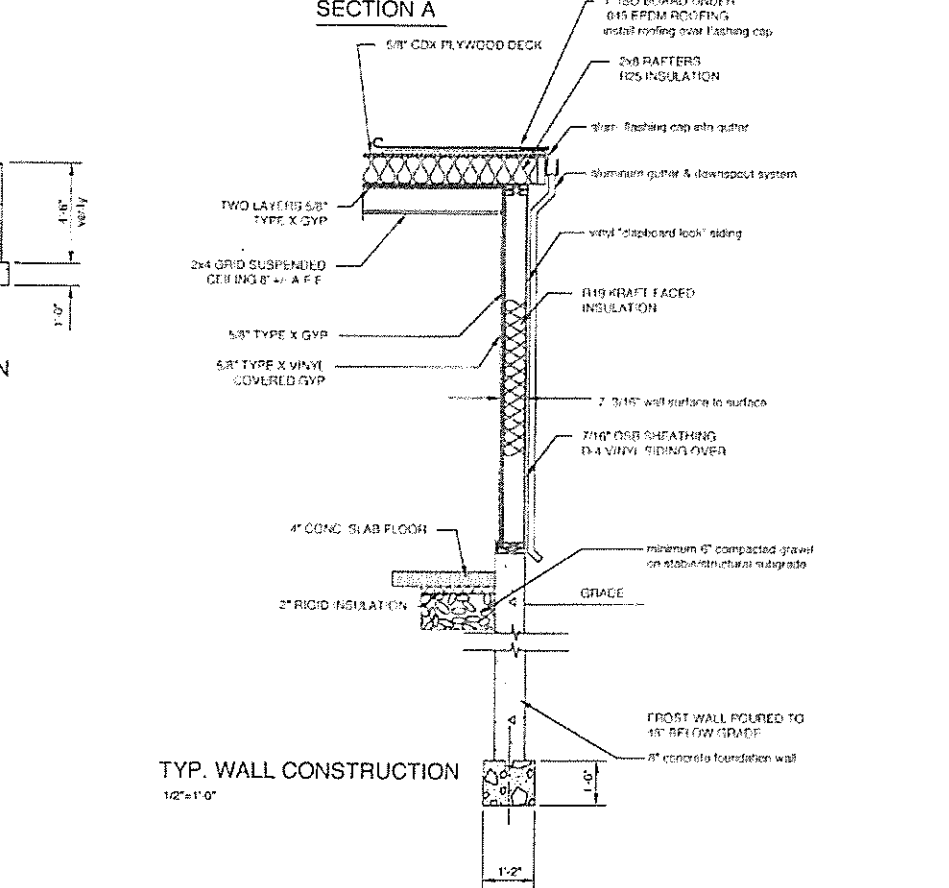
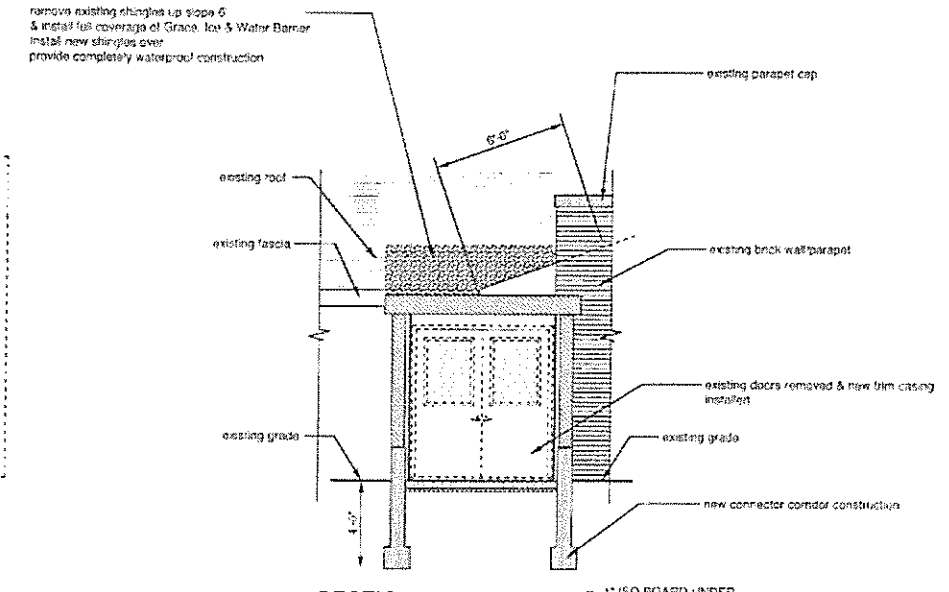
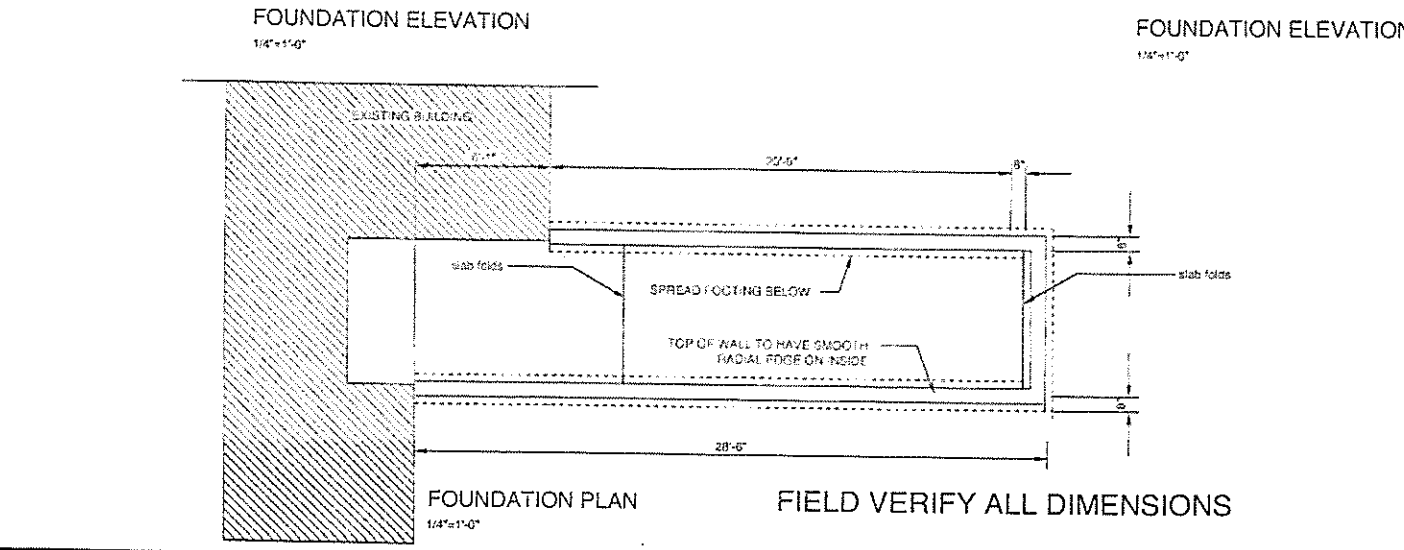
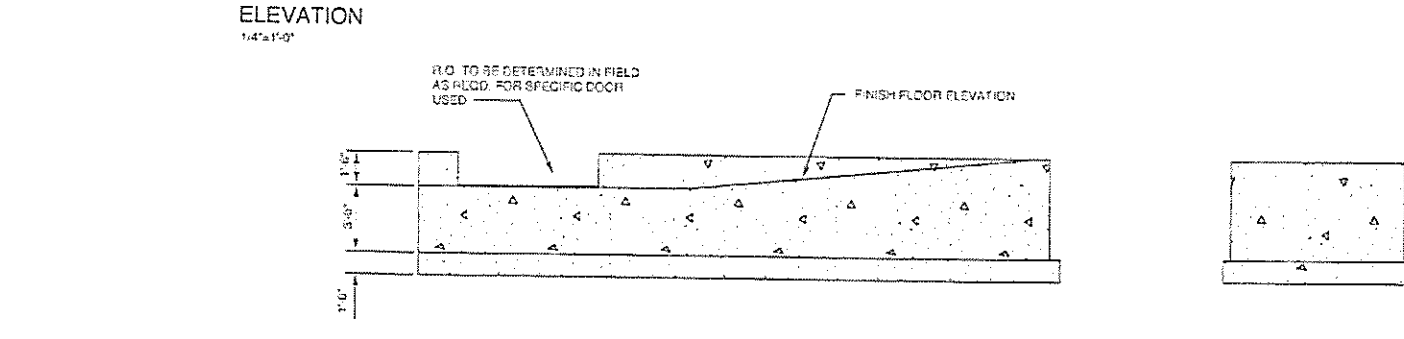
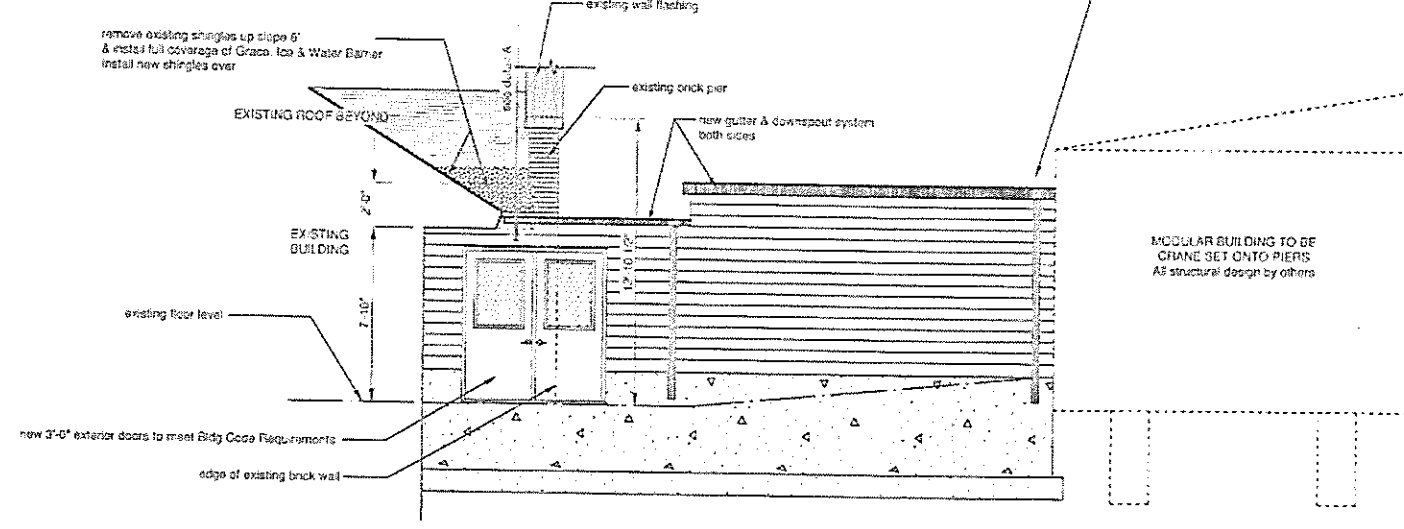
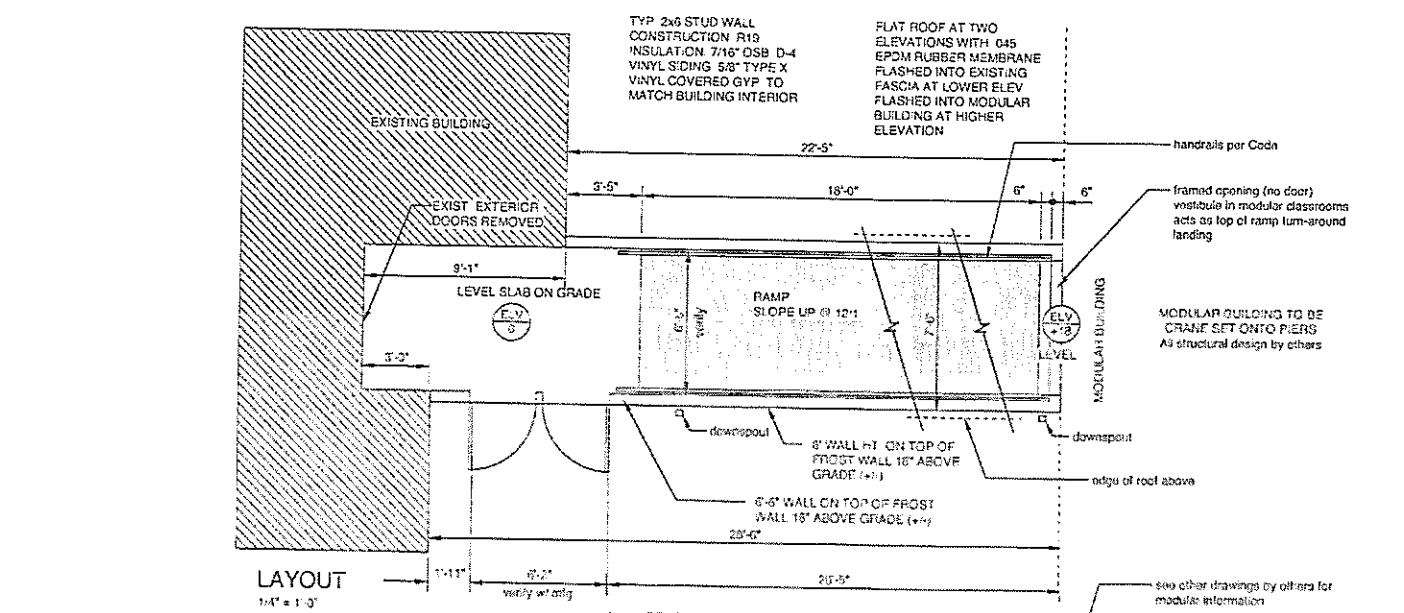


CONNECTOR CORRIDOR CONSTRUCTION FOR NEWTON ST. SCHOOL



The Shelburne Architects

JOSEPH P. MATTEI & ASSOCIATES A I A

ARCHITECTURE PLANNING FORENSICS

25 GUY MANNERS RD
SHELburne MASSACHUSETTS 01370

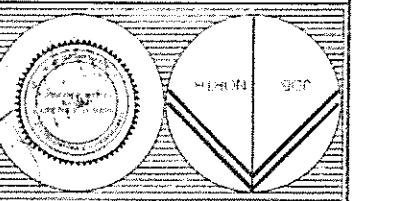
VOICE: 413.025.2584
FAX: 413.025.2029

Full Service Architectural Firm serving MA, VT, NH & CT

Newton Street School Modular Addition

Schiavi Leasing Corp.

AUTHORIZED USE OF THIS DOCUMENT
This Document is authorized for use only if it bears the Architect's Seal with his/her signature transcribed upon it.



SCALE: 1/4" = 1'-0" UNLESS NOTED OTHERWISE

SHEET FLOOR PLAN & DETAILS

REVISIONS		
REV	DESCRIPTION	DATE

DRAWN: jpm	PROJECT NO: 9818
CHECKED:	PROJECT DATE: Summer 98
APPROVED:	A 0 1